



RV Aranda

CRUISE PLAN

Combine 1 Leg 1 GOF, 1/2015 19. - 24.1.2015

Description of the cruise

Monitoring of physical parameters (temperature, salinity, dissolved oxygen), general hydrography, nutrients and zooplankton of the Baltic Sea according to HELCOM MONAS program. Leg 1 has special emphasis on Gulf of Finland, and aims at establishing baseline environmental database through extended station

Scientific staff:

Chief scientist:	Juha Flinkman	SYKE	19.01.2015 - 24.01.2015
CTD chief:		SYKE-	19.01.2015 - 24.01.2015
Chief chemist:		SYKE	19.01.2015 - 24.01.2015
		SYKE	19.01.2015 - 24.01.2015
		SYKE	19.01.2015 - 24.01.2015
		SYKE	19.01.2015 - 24.01.2015
		FMI	19.01.2015 - 24.01.2015
		SYKE	19.01.2015 - 24.01.2015
		SYKE	19.01.2015 - 24.01.2015
		FMI	19.01.2015 - 24.01.2015
		SYKE	19.01.2015 - 24.01.2015
		FMI	19.01.2015 - 24.01.2015
		ROSGIDROMET	19.01.2015 - 24.01.2015
		ROSGIDROMET	19.01.2015 - 24.01.2015

Altogether 14 persons in scientific staff.

Departure from: HELSINKI
Departure time: Monday 19.01.2015 at 12:00

Cruising speed: 10,0 knots
Average station time: 1 h 30 min.

Arrival to: HELSINKI
Arrival time: Saturday 24.01.2015 at 05:09

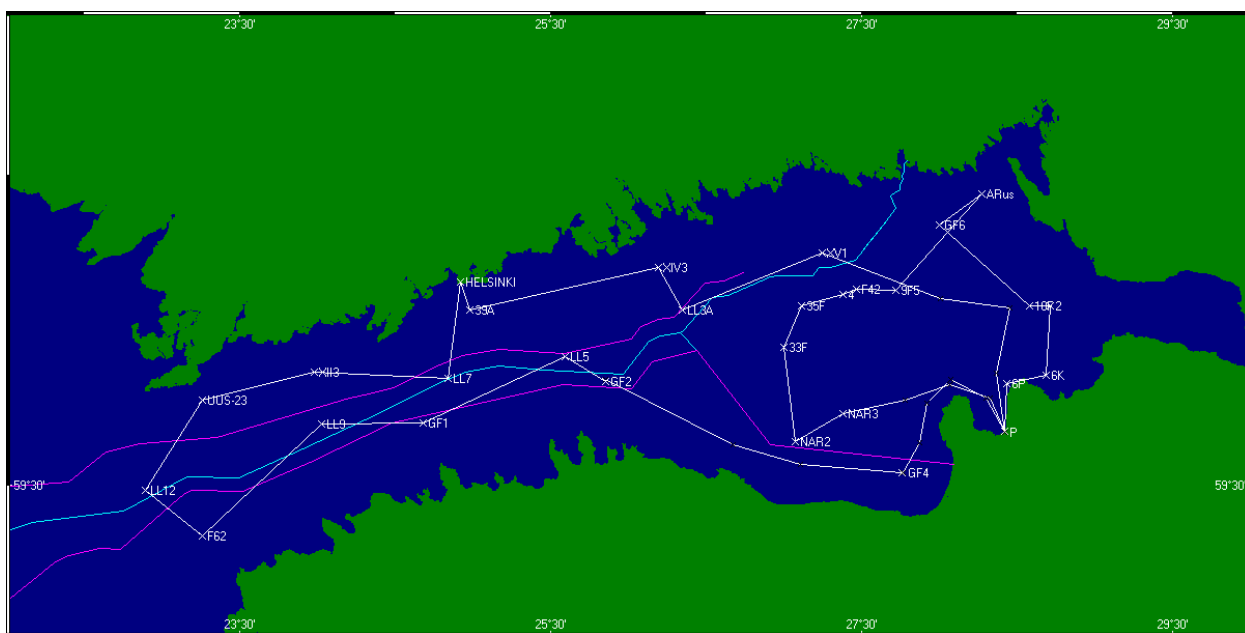
Duration of the cruise: 4 days 17 h 9 min
Length of the cruise: 621,98 nautical miles
Number of stations 27. Points with name "P" are just route points without observations.

Route:

Nro	Station	Lat.	Long.	Depth [m]	hh:mm	Arrival		Durat. hh:mm	Speed knots
						dy	dd.mm.yyyy		
0	HELSINKI	60°09.55'	24°55.37'	0	12:00	Mo	19.01.2015	0:00	S 10,0
1	39A	60°04.01'	24°58.81'	41	12:34	Mo	19.01.2015	1:00	S 10,0
2	XIV3	60°12.19'	26°11.57'	77	17:17	Mo	19.01.2015	1:30	S 10,0
3	LL3A	60°04.03'	26°20.80'	68	19:43	Mo	19.01.2015	1:30	S 10,0
4	XV1	60°15.00'	27°14.82'	64	00:08	Tu	20.01.2015	1:30	S 10,0
5	P	60°06.30'	28°00.48'	-	04:03	Tu	20.01.2015	0:00	S 10,0

6	P	60°04.50'	28°27.28'	-	05:24	Tu	20.01.2015	0:00	S	10,0
7	P	59°51.89'	28°22.08'	-	06:42	Tu	20.01.2015	0:00	S	10,0
8	P	59°40.40'	28°25.28'	-	07:51	Tu	20.01.2015	0:00	S	10,0
9	UST-LUGA	59°40.55'	28°25.36'	0	07:52	Tu	20.01.2015	4:30	S	10,0
10	6P	59°49.80'	28°26.00'	28	13:18	Tu	20.01.2015	1:00	S	10,0
11	6K	59°51.50'	28°41.50'	26	15:05	Tu	20.01.2015	1:30	S	10,0
12	2	60°05.00'	28°43.00'	37	17:57	Tu	20.01.2015	1:30	S	10,0
13	10F	60°05.00'	28°35.00'	30	19:51	Tu	20.01.2015	1:30	S	10,0
14	GF6	60°20.31'	28°00.11'	44	23:39	Tu	20.01.2015	1:30	S	10,0
15	ARus	60°26.30'	28°16.70'	30	02:10	We	21.01.2015	1:00	S	10,0
16	9F5	60°07.90'	27°43.50'	30	05:38	We	21.01.2015	1:00	S	10,0
17	F42	60°08.04'	27°27.94'	63	07:25	We	21.01.2015	1:30	S	10,0
18	4	60°07.00'	27°23.00'	61	09:11	We	21.01.2015	1:30	S	10,0
19	35F	60°05.00'	27°07.00'	60	11:30	We	21.01.2015	1:30	S	10,0
20	33F	59°57.00'	27°00.00'	60	13:53	We	21.01.2015	1:30	S	10,0
21	NAR2	59°38.61'	27°04.61'	59	17:14	We	21.01.2015	1:30	S	10,0
22	NAR3	59°44.13'	27°22.88'	72	19:48	We	21.01.2015	1:30	S	6,0
23	P	59°46.66'	27°46.87'	-	23:22	We	21.01.2015	0:00	S	6,0
24	P	59°49.67'	28°04.08'	-	00:53	Th	22.01.2015	0:00	S	6,0
25	P	59°47.06'	28°19.68'	-	02:16	Th	22.01.2015	0:00	S	6,0
26	UST-LUGA	59°40.55'	28°25.36'	0	03:27	Th	22.01.2015	5:30	S	10,0
27	P	59°47.06'	28°18.12'	-	09:42	Th	22.01.2015	0:00	S	10,0
28	P	59°50.68'	28°04.51'	-	10:28	Th	22.01.2015	0:00	S	10,0
29	P	59°46.05'	27°55.31'	-	11:08	Th	22.01.2015	0:00	S	10,0
30	P	59°38.38'	27°52.51'	-	11:54	Th	22.01.2015	0:00	S	10,0
31	P	59°32.51'	27°46.11'	-	12:35	Th	22.01.2015	0:00	S	10,0
32	GF4	59°32.58'	27°45.91'	35	12:35	Th	22.01.2015	1:30	S	10,0
33	P	59°34.13'	27°06.49'	-	16:06	Th	22.01.2015	0:00	S	10,0
34	P	59°37.98'	26°40.49'	-	17:28	Th	22.01.2015	0:00	S	10,0
35	P	59°50.68'	25°51.27'	-	20:15	Th	22.01.2015	0:00	S	10,0
36	GF2	59°50.31'	25°51.41'	84	20:17	Th	22.01.2015	1:30	S	10,0
37	LL5	59°55.01'	25°35.82'	70	22:42	Th	22.01.2015	1:30	S	10,0
38	GF1	59°42.30'	24°40.93'	84	03:14	Fr	23.01.2015	1:30	S	10,0
39	LL9	59°42.01'	24°01.81'	69	06:43	Fr	23.01.2015	1:30	S	10,0
40	F62	59°20.01'	23°15.81'	95	11:25	Fr	23.01.2015	1:30	S	10,0
41	LL12	59°29.01'	22°53.81'	82	14:21	Fr	23.01.2015	1:30	S	10,0
42	UUS-23	59°46.61'	23°15.77'	60	17:56	Fr	23.01.2015	1:30	S	10,0
43	XII3	59°52.01'	23°58.81'	38	21:40	Fr	23.01.2015	1:30	S	10,0
44	LL7	59°50.79'	24°50.27'	100	01:45	Sa	24.01.2015	1:30	S	10,0
45	HELSINKI	60°09.55'	24°55.37'	0	05:09	Sa	24.01.2015	1:30	S	10,0

Route map:



Cruise plan is printed at 12.12.2014 a 11:45.